

TOWNSHIP OF LIMERICK REHABILITATION OF STEENBURG LAKE ROAD NORTH CONTRACT No 150-3794

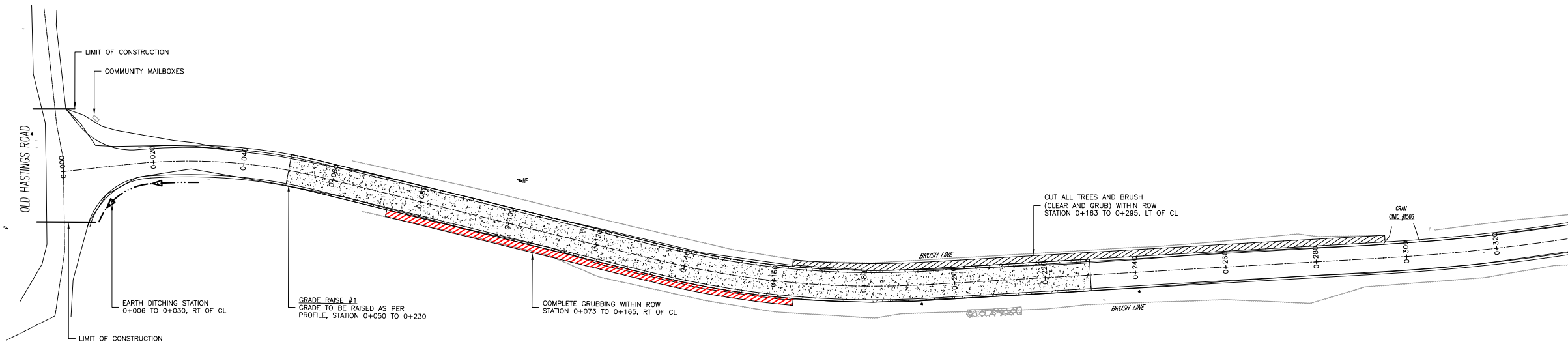


 **G.D. JEWELL ENGINEERING INC.**
CONSULTING ENGINEERS

KINGSTON	BELLEVALE	MISSISSAUGA
TEL: (613) 396-7250	TEL: (613) 966-1111	TEL: (905) 855-1592
FAX: (613) 396-2764	FAX: (613) 966-8998	FAX: (905) 855-5428
Email: kingston@jewelleng.ca	Email: info@jewelleng.ca	Email: mississauga@jewelleng.ca

TOLL FREE 1-800-966-4338
www.jewelleng.ca

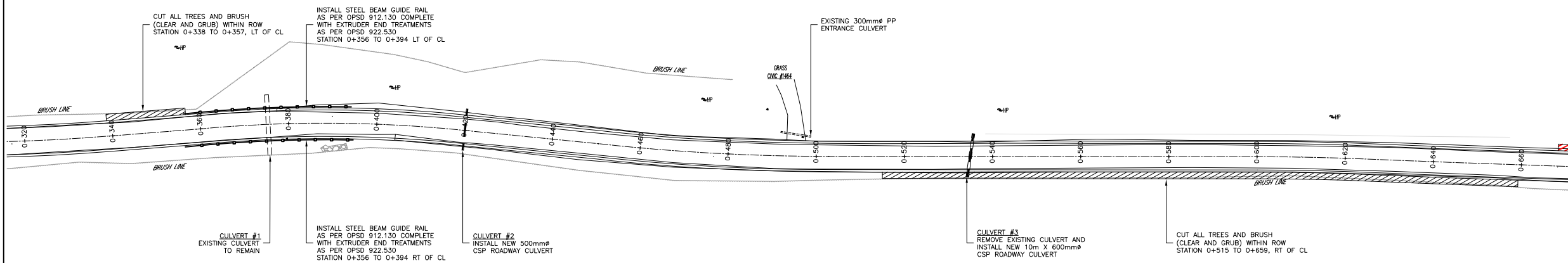
STEENBURG LAKE ROAD NORTH



GENERAL NOTES:
 ALL DIMENSIONS TO BE SHOWN ON THE DRAWING TO CORROBORATE ANY WORK. ANY DIMENSIONS NOT TO BE SHOWN TO BE CORROBORATED BY THE CONTRACTOR.
 ALL UTILITY LOCATIONS SHOWN ON THE DRAWING ARE APPROXIMATE. THE CONTRACTOR SHALL VERIFY THE LOCATION OF ALL UTILITIES AND LOCATIONS FOR DEPTH OF ALL UTILITIES.
 EXISTING UTILITIES AND STRUCTURES SHOWN FOR THIS PROJECT, AND OTHER UTILITIES ARE TO BE USED AS A REFERENCE ONLY FOR ANY PURPOSE.
REVISIONS:
 ALL DIMENSIONS SHOWN ARE IN METERS UNLESS OTHERWISE SPECIFIED.
 ALL DIMENSIONS ARE NOT TO BE SCALED.

No.	Date	Description	By
12/13/2016		PRELIMINARY DRAWINGS FOR REVIEW	

STEENBURG LAKE ROAD NORTH



G.D. JEWELL ENGINEERING INC.
 CONSULTING ENGINEERS

REGISTRATION: TEL: (513) 388-2250 FAX: (513) 388-2754 E-mail: gdj@jewelleng.com

ILLINOIS: TEL: (618) 965-1111 FAX: (618) 965-0989 E-mail: illinois@jewelleng.com

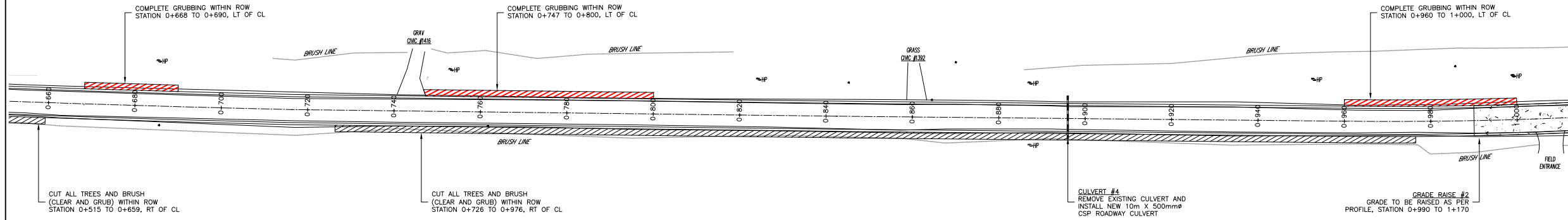
INDIANA: TEL: (815) 655-1932 FAX: (815) 655-6428 E-mail: indiana@jewelleng.com

TOLL FREE 1-800-966-4338
 www.jewelleng.ca

TOWNSHIP OF LIMERICK
 REHABILITATION OF
 STEENBURG LAKE ROAD NORTH

Drawn by: CCG Project No: 150-3794
 Designed by: CB Date: DECEMBER 2016
 Checked by: CB Scale - Hor: Vert:
 Approved by: CB Contract No: Drawing No: 1

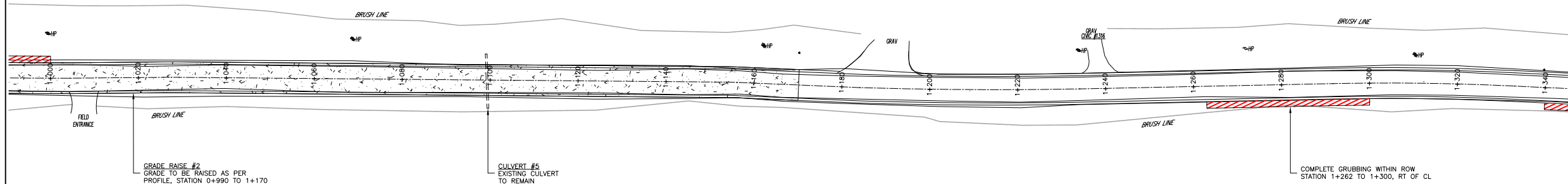
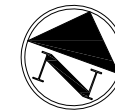
STEENBURG LAKE ROAD NORTH



GENERAL NOTES:
 ALL DIMENSIONS TO BE SHOWN ON THE DRAWING TO CORROBORATE ANY WORK. ANY DIMENSIONS ARE TO BE REFERRED TO THE CORRESPONDING DIMENSIONS.
 ALL UTILITY LOCATIONS SHOWN ON THE DRAWING ARE APPROXIMATE. THE CONTRACTOR SHALL VERIFY THE LOCATION OF ALL UTILITIES AND LOCATIONS FOR EXISTING UTILITIES.
 REGARDING THE EXISTING AND PROPOSED UTILITIES FOR THIS PROJECT, NO OTHER UTILITIES ARE TO BE SHOWN AS A REFERENCE EXCEPT FOR ANY PURPOSES.
REVISIONS:
 ALL DIMENSIONS SHOWN ARE IN METERS UNLESS OTHERWISE SPECIFIED.
 ALL DIMENSIONS ARE TO BE SCALED.

No.	Date	Description	By
12/13/2016		PRELIMINARY DRAWINGS FOR REVIEW	

STEENBURG LAKE ROAD NORTH



G.D. JEWELL ENGINEERING INC.
 CONSULTING ENGINEERS

PROXIMON **SELEWILLE** **INDUSSAVALA**

TEL: (813) 388-2250 TEL: (813) 965-1111 TEL: (805) 655-1932
 FAX: (813) 388-2754 FAX: (813) 965-0988 FAX: (805) 655-6438
 E-MAIL: gje@gdjewell.com E-MAIL: rdj@gdjewell.com E-MAIL: rdj@gdjewell.com

TOLL FREE 1-800-966-4338
 www.gdjewell.com

TOWNSHIP OF LIMERICK
 REHABILITATION OF
 STEENBURG LAKE ROAD NORTH

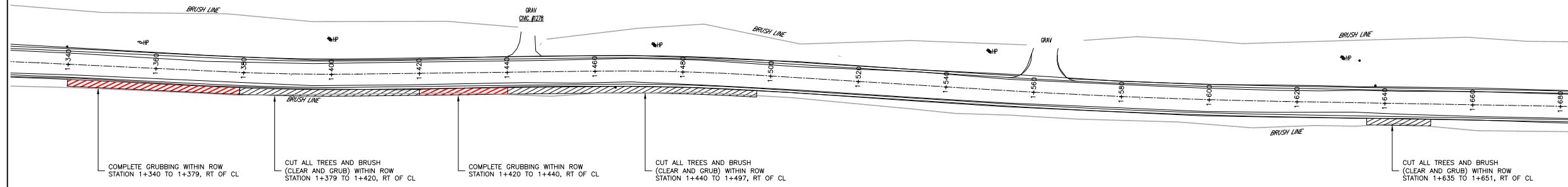
Drawn by: CCG Project No: 150-3794
 Designed by: CB Date: DECEMBER 2016
 Checked by: CB Scale - Hor: Vert:
 Approved by: CB Contract No: Drawing No: 2

STEENBURG LAKE ROAD NORTH



GENERAL NOTES:
 ALL DIMENSIONS TO BE SHOWN ON THE DRAWING TO CORRESPOND ANY WORK. ANY DIMENSIONS ARE TO BE SHOWN TO THE CORRESPONDING DIMENSION.
 ALL UTILITY LOCATIONS SHOWN ON THE DRAWING ARE APPROXIMATE. THE CONTRACTOR SHALL VERIFY THE LOCATION OF ALL UTILITIES AND LOCATIONS FOR EXISTING UTILITIES.
 REGARDING THE APPROXIMATE AND APPROXIMATE PROVIDED FOR THIS PROJECT, NO OTHER DIMENSIONS ARE TO BE USED AS A REFERENCE DIMENSION FOR ANY PURPOSE.
NOTES:
 ALL DIMENSIONS SHOWN ARE IN METERS OR MILLIMETERS UNLESS OTHERWISE NOTED.
 ALL DIMENSIONS ARE NOT TO BE SCALED.

REVISIONS			
No.	Date	Description	By
12/13/2016		PRELIMINARY DRAWINGS FOR REVIEW	



STEENBURG LAKE ROAD NORTH

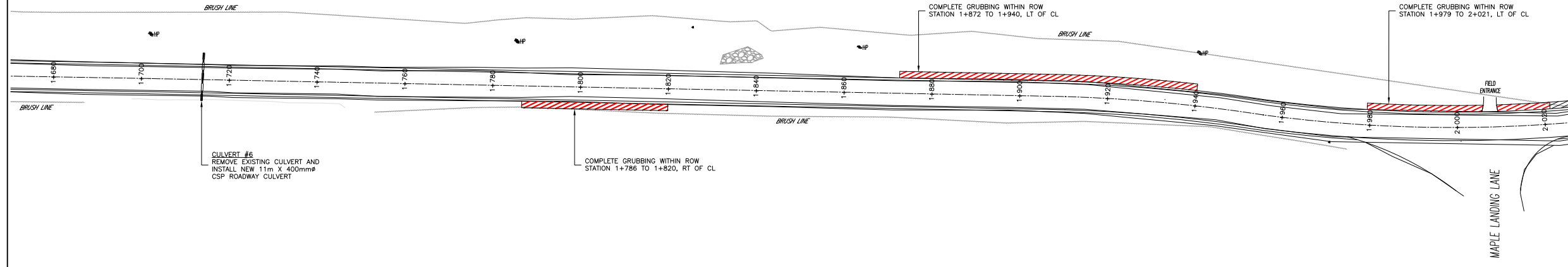


G.D. JEWELL ENGINEERING INC.
 CONSULTING ENGINEERS

PROXIMA **QUEBEC** **MONTREAL**

TEL: (514) 389-2250 TEL: (514) 389-1111 TEL: (514) 389-1912
 FAX: (514) 389-2754 FAX: (514) 389-0988 FAX: (514) 389-0428
 E-mail: gje@gdjewell.com E-mail: mj@gdjewell.com E-mail: rd@gdjewell.com

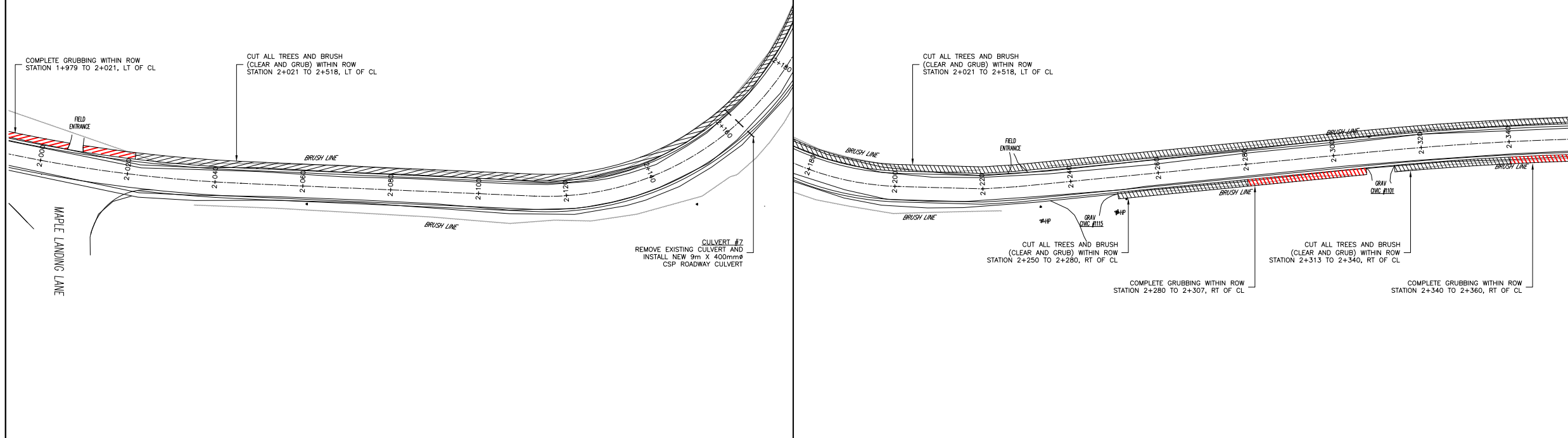
TOLL FREE 1-800-966-4338
 www.gdjewell.com



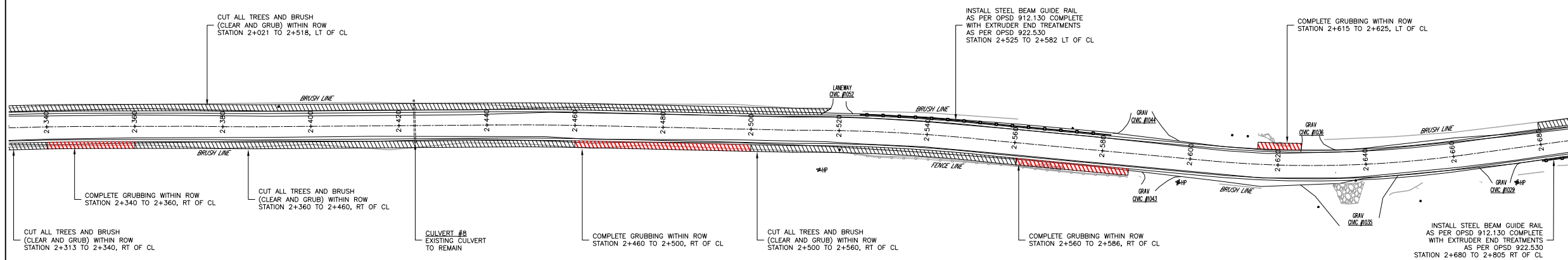
TOWNSHIP OF LIMERICK
 REHABILITATION OF
 STEENBURG LAKE ROAD NORTH

Drawn by: CCG Project No: 150-3794
 Designed by: CB Date: DECEMBER 2016
 Checked by: CB Scale - Hor: Vert:
 Approved by: CB Contract No: Drawing No: 3

STEENBURG LAKE ROAD NORTH



STEENBURG LAKE ROAD NORTH



GENERAL NOTES:
 ALL DIMENSIONS TO BE VERIFIED ON THE FIELD TO CORROBORATE ANY WORK. ANY DISCREPANCIES ARE TO BE REPORTED TO THE CONSULTANT IMMEDIATELY.
 ALL UTILITY LOCATIONS SHOWN ON THE DRAWING ARE APPROXIMATE. THE CONTRACTOR SHALL VERIFY THE LOCATION OF ALL UTILITIES AND REPORT ALL DISCREPANCIES TO THE CONSULTANT IMMEDIATELY.
 REGARDING THE SPECIFICATIONS AND REQUIREMENTS PROVIDED FOR THIS PROJECT, NO OTHER SPECIFICATIONS ARE TO BE USED AS A REFERENCE EXCEPT FOR ANY PURPOSES.
METRIC NOTE:
 ALL DIMENSIONS SHOWN ARE IN METERS UNLESS OTHERWISE SPECIFIED.
 ALL DIMENSIONS ARE TO BE SCALED.

REVISIONS			
No.	Date	Description	By
12/13/2016		PRELIMINARY DRAWINGS FOR REVIEW	



G.D. JEWELL ENGINEERING INC.
 CONSULTING ENGINEERS

PROXIMON **QUEBEC** **MISSISSAUGA**

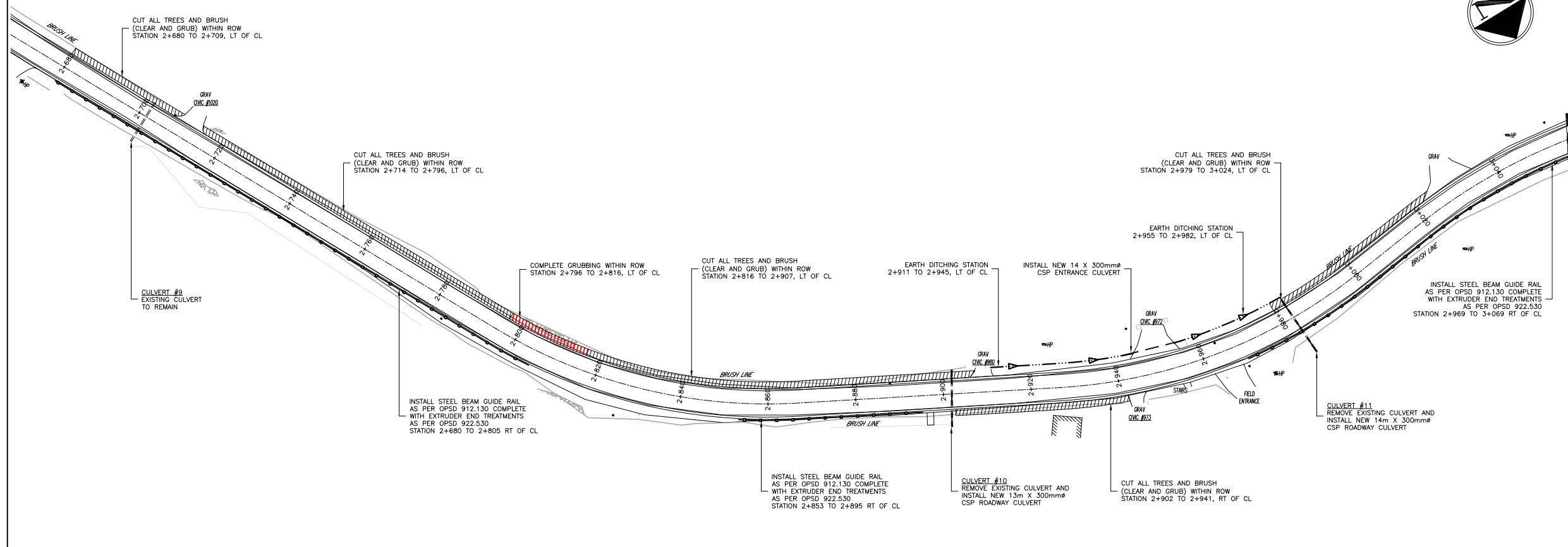
TEL: (514) 389-2250 TEL: (514) 389-1111 TEL: (905) 850-9192
 FAX: (514) 389-2754 FAX: (514) 389-0989 FAX: (905) 850-6428
 E-mail: gje@gdjewell.com E-mail: gje@gdjewell.com E-mail: hje@gdjewell.com

TOLL FREE 1-800-966-4338
 www.gdjewell.com

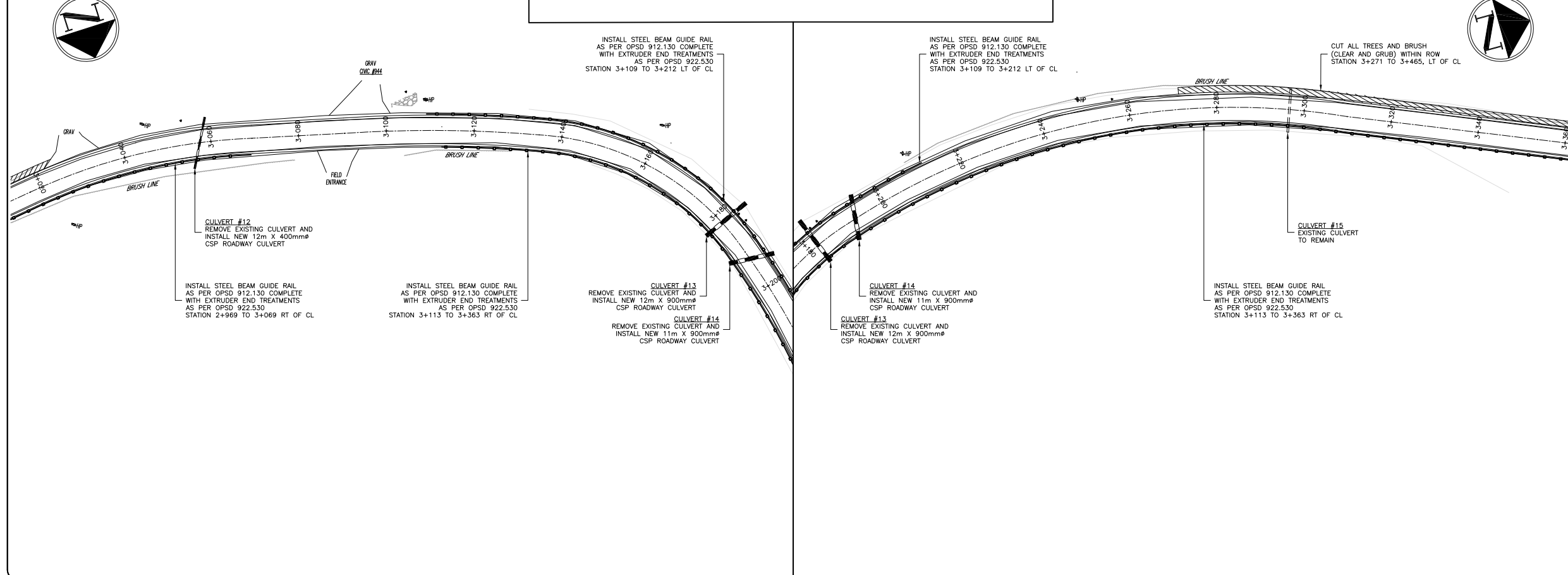
TOWNSHIP OF LIMERICK REHABILITATION OF STEENBURG LAKE ROAD NORTH

Drawn by: CCG Project No: 150-3794
 Designed by: CB Date: DECEMBER 2016
 Checked by: CB Scale - Hor: Vert:
 Approved by: CB Contract No: Drawing No: 4

STEENBURG LAKE ROAD NORTH



STEENBURG LAKE ROAD NORTH



GENERAL NOTES:
 ALL DIMENSIONS TO BE SHOWN ON THE DRAWING TO CORROBORATE ANY WORK. ANY DIMENSIONS ARE TO BE SHOWN TO THE CORNER OF THE BRUSH LINE.
 ALL UTILITY LOCATIONS SHOWN ON THE DRAWING ARE APPROXIMATE. THE CONTRACTOR SHALL VERIFY THE LOCATION OF ALL UTILITIES AND LOCATIONS FOR ANY OTHER UTILITIES. THE CONTRACTOR SHALL VERIFY THE LOCATION OF ALL UTILITIES AND LOCATIONS FOR ANY OTHER UTILITIES. THE CONTRACTOR SHALL VERIFY THE LOCATION OF ALL UTILITIES AND LOCATIONS FOR ANY OTHER UTILITIES.
 ALL DIMENSIONS SHOWN ARE IN METERS OR MILLIMETERS UNLESS OTHERWISE NOTED.
 ALL DIMENSIONS ARE TO BE SHOWN TO THE CORNER OF THE BRUSH LINE.

REVISIONS			
No.	Date	Description	By
12/13/2016		PRELIMINARY DRAWINGS FOR REVIEW	



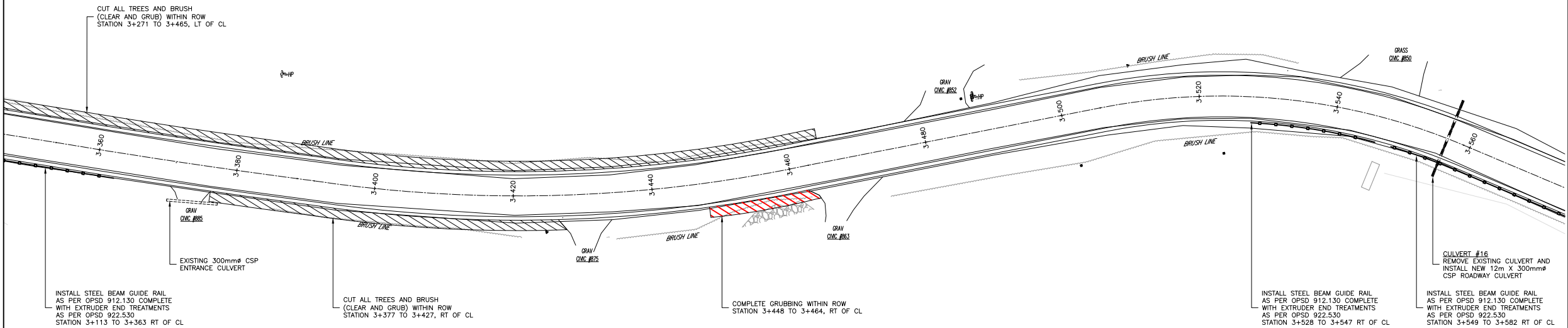
G.D. JEWELL ENGINEERING INC.
 CONSULTING ENGINEERS

REGISTRATION: TEL: (513) 389-2250 FAX: (513) 389-2754
 BELLEVILLE: TEL: (513) 389-1111 FAX: (513) 389-0989
 SPRINGFIELD: TEL: (505) 850-9192 FAX: (505) 850-6028
 TOLL FREE 1-800-966-4338
www.jewelleng.ca

TOWNSHIP OF LIMERICK
 REHABILITATION OF
 STEENBURG LAKE ROAD NORTH

Drawn by: CCG Project No: 150-3794
 Designed by: CB Date: DECEMBER 2016
 Checked by: CB Scale - Hor: Vert:
 Approved by: CB Contract No: Drawing No: 5

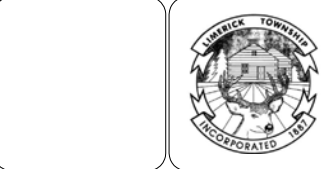
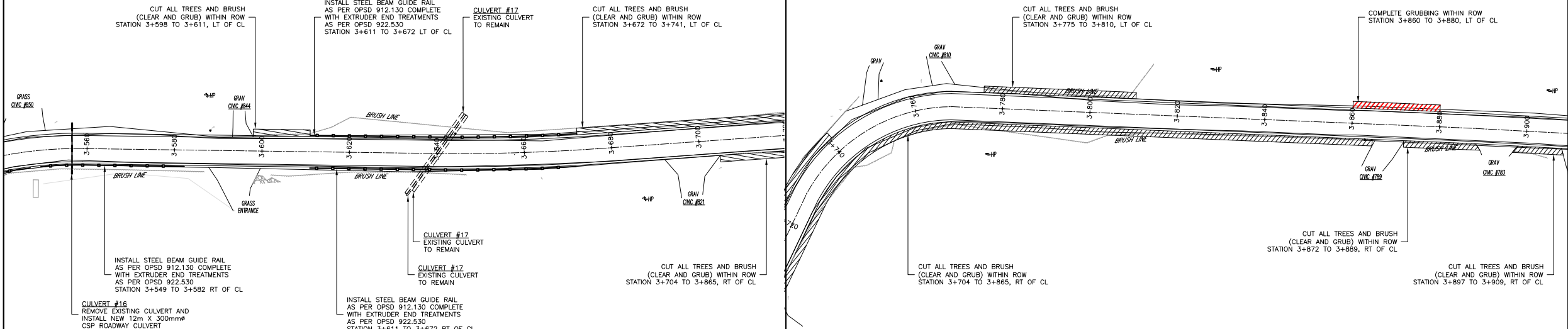
STEENBURG LAKE ROAD NORTH



GENERAL NOTES:
 ALL DIMENSIONS TO BE SHOWN ON THE DRAWING TO CORRESPOND ANY WORK. ANY DIMENSIONS ARE TO BE REFERRED TO THE CORRESPONDING DIMENSIONS.
 ALL UTILITY LOCATIONS SHOWN ON THE DRAWING ARE APPROXIMATE. THE CONTRACTOR SHALL VERIFY THE LOCATION OF ALL UTILITIES AND LOCATIONS FOR EXISTING AND ALL UTILITIES.
 REGARDING THE EXISTING AND PROPOSED UTILITIES FOR THIS PROJECT, NO OTHER UTILITIES ARE TO BE USED AS A REFERENCE EXCEPT FOR ANY PURPOSE.
MEASUREMENTS:
 ALL DIMENSIONS SHOWN ARE IN METERS OR MILLIMETERS UNLESS OTHERWISE NOTED.
 ALL DIMENSIONS ARE TO BE SHOWN TO THE CENTERLINE.

REVISIONS			
No.	Date	Description	By
12/13/2016		PRELIMINARY DRAWINGS FOR REVIEW	

STEENBURG LAKE ROAD NORTH



G.D. JEWELL ENGINEERING INC.
 CONSULTING ENGINEERS

PROFESSIONAL **REGISTERED** **MEMBERSHIP**

TEL: (913) 388-2250 TEL: (913) 965-1111 TEL: (913) 965-1912
 FAX: (913) 388-2754 FAX: (913) 965-0988 FAX: (913) 965-0428
 E-MAIL: gje@gdjewell.com E-MAIL: rd@gdjewell.com E-MAIL: rd@gdjewell.com

TOLL FREE 1-800-966-4338
 www.gdjewell.com

TOWNSHIP OF LIMERICK
 REHABILITATION OF
 STEENBURG LAKE ROAD NORTH

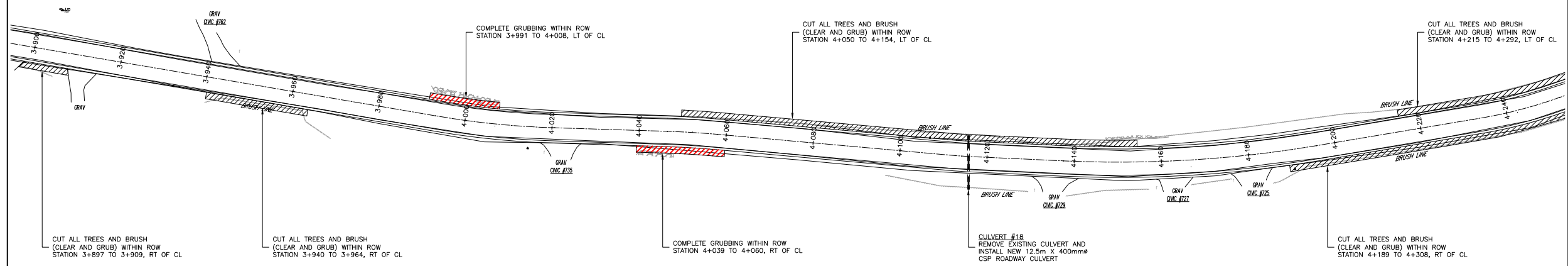
Drawn by: CCG Project No: 150-3794
 Designed by: CB Date: DECEMBER 2016
 Checked by: CB Scale - Hor: Vert:
 Approved by: CB Contract No: Drawing No: 6

STEENBURG LAKE ROAD NORTH



GENERAL NOTES:
 ALL DIMENSIONS TO BE SHOWN ON THE DRAWING TO CORROBORATE ANY WORK. ANY DIMENSIONS ARE TO BE REFERRED TO THE CORROBORATING DIMENSIONS.
 ALL UTILITY LOCATIONS SHOWN ON THE DRAWING ARE APPROXIMATE. THE CONTRACTOR SHALL VERIFY THE LOCATION OF THE AND REMOVE ALL UTILITIES FOR EXISTING OR ALL UTILITIES.
 EXISTING THE UTILITIES AND APPROXIMATE LOCATIONS FOR THIS PROJECT. NO OTHER UTILITIES ARE TO BE SHOWN AS A REFERENCE EXCEPT FOR ANY PURPOSES.
REVISIONS:
 ALL DIMENSIONS SHOWN ARE IN METERS OR MILLIMETERS UNLESS OTHERWISE NOTED.
 ALL DIMENSIONS ARE NOT TO BE SCALED.

No.	Date	Description	By
12/13/2016		PRELIMINARY DRAWINGS FOR REVIEW	



STEENBURG LAKE ROAD NORTH

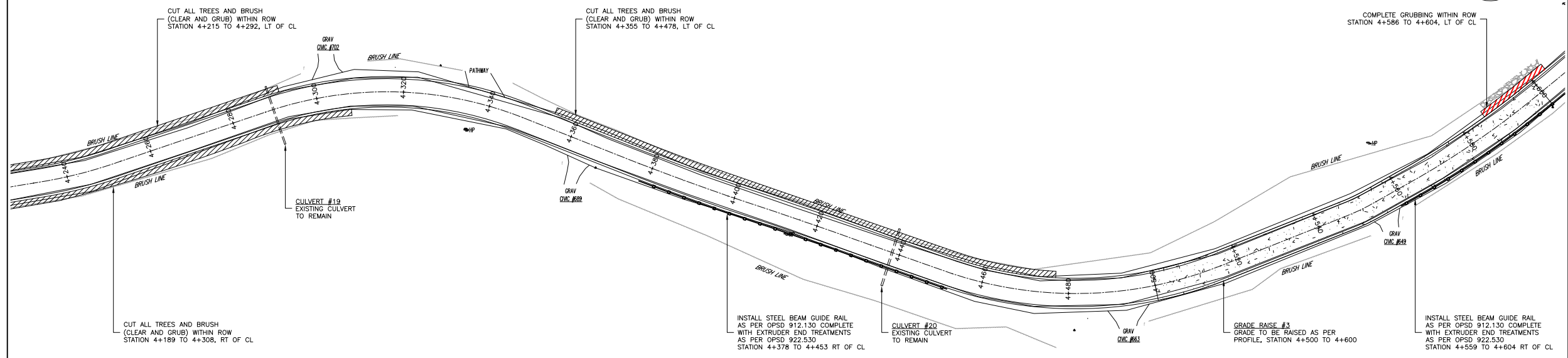


G.D. JEWELL ENGINEERING INC.
 CONSULTING ENGINEERS

PROXIMON **SEATTLE** **MISSISSAUGA**

TEL: (613) 389-2250 TEL: (613) 965-1111 TEL: (905) 605-1912
 FAX: (613) 389-2754 FAX: (613) 965-0988 FAX: (905) 605-6428
 E-mail: gje@gdjewell.com E-mail: sj@gdjewell.com E-mail: rd@gdjewell.com

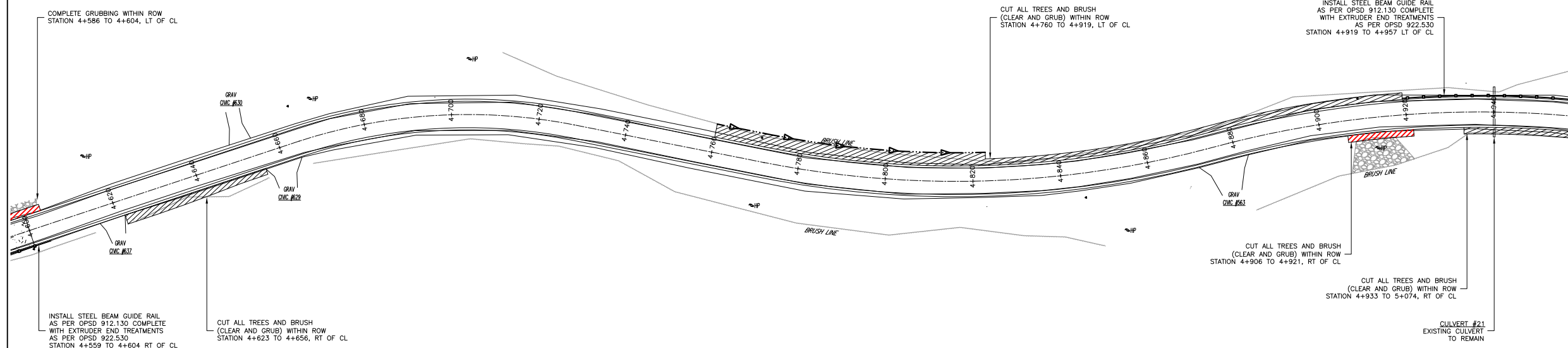
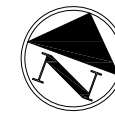
TOLL FREE 1-800-966-4338
 www.gdjewell.com



TOWNSHIP OF LIMERICK
 REHABILITATION OF
 STEENBURG LAKE ROAD NORTH

Drawn by: CCG Project No: 150-3794
 Designed by: CB Date: DECEMBER 2016
 Checked by: CB Scale - Hor: Vert:
 Approved by: CB Contract No: Drawing No: 7

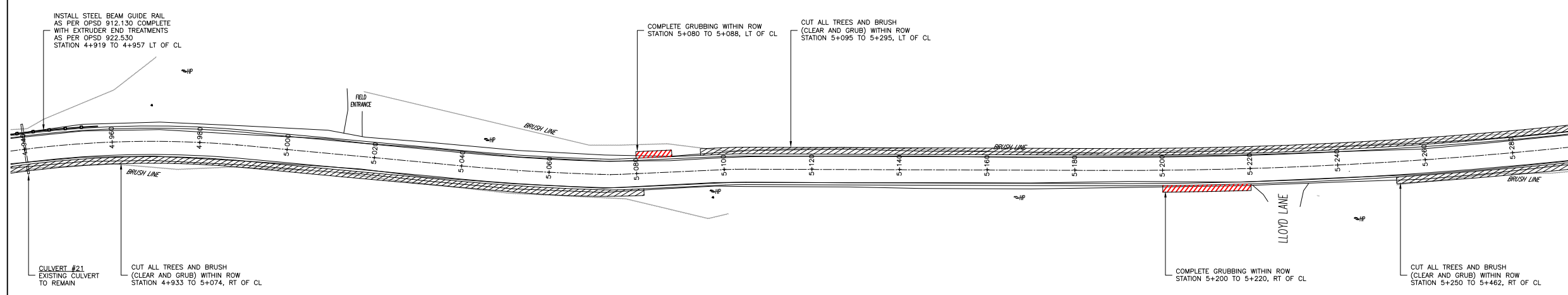
STEENBURG LAKE ROAD NORTH



GENERAL NOTES:
 ALL DIMENSIONS TO BE SHOWN ON THE DRAWING TO CORROBORATE ANY WORK. ANY DIMENSIONS ARE TO BE SHOWN TO THE CORNER POINT UNLESS OTHERWISE NOTED.
 ALL UTILITY LOCATIONS SHOWN ON THE DRAWING ARE APPROXIMATE. THE CONTRACTOR SHALL VERIFY THE LOCATION OF ALL UTILITIES AND LOCATIONS FOR DEPTH OF ALL UTILITIES.
 REGARDING THE APPROXIMATE AND APPROXIMATE PROVIDED FOR THIS PROJECT, NO OTHER DIMENSIONS ARE TO BE USED AS A REFERENCE DIMENSION FOR ANY PURPOSE.
REVISIONS:
 ALL DIMENSIONS SHOWN ARE IN METERS OR INDICATED UNLESS OTHERWISE NOTED.
 ALL DIMENSIONS ARE NOT TO BE SCALED.

No.	Date	Description	By
12/13/2016		PRELIMINARY DRAWINGS FOR REVIEW	

STEENBURG LAKE ROAD NORTH



G.D. JEWELL ENGINEERING INC.
 CONSULTING ENGINEERS

PROXIMA **QUEBEC** **MONTREAL**

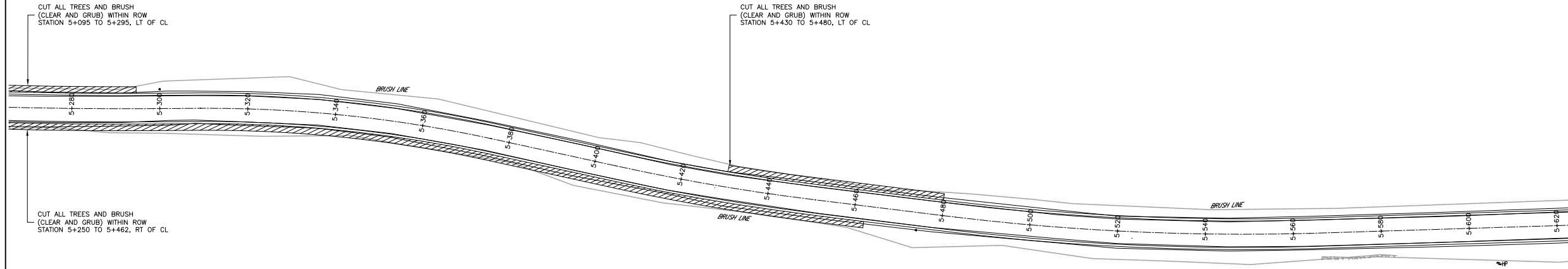
TEL: (514) 389-2250 TEL: (514) 389-1111 TEL: (514) 389-1912
 FAX: (514) 389-2754 FAX: (514) 389-0989 FAX: (514) 389-6428
 E-mail: gje@gdjewell.com E-mail: mj@gdjewell.com E-mail: rd@gdjewell.com

TOLL FREE 1-800-966-4338
 www.gdjewell.com

TOWNSHIP OF LIMERICK
 REHABILITATION OF
 STEENBURG LAKE ROAD NORTH

Drawn by: CCG Project No: 150-3794
 Designed by: CB Date: DECEMBER 2016
 Checked by: CB Scale - Hor: Vert:
 Approved by: CB Contract No: Drawing No: 8

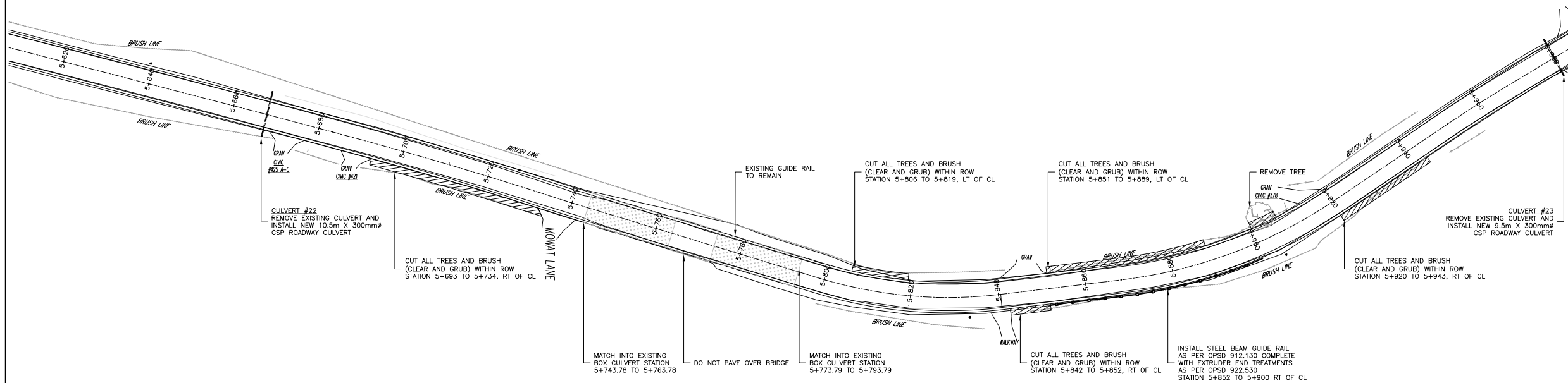
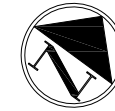
STEENBURG LAKE ROAD NORTH



GENERAL NOTES:
 ALL DIMENSIONS TO BE SHOWN ON THE DRAWING TO CORROBORATE ANY WORK. ANY DIMENSIONS ARE TO BE REFERRED TO THE CORRESPONDING DIMENSIONS.
 ALL UTILITY LOCATIONS SHOWN ON THE DRAWING ARE APPROXIMATE. THE CONTRACTOR SHALL VERIFY THE LOCATION OF ALL UTILITIES AND LOCATIONS FOR EXISTING UTILITIES.
 REGARDING THE EXISTING AND PROPOSED UTILITIES FOR THIS PROJECT, NO OTHER DIMENSIONS ARE TO BE USED AS A REFERENCE DIMENSION FOR ANY PURPOSE.
MEASUREMENTS:
 ALL DIMENSIONS SHOWN ARE IN METERS OR INDICATED UNLESS OTHERWISE NOTED.
 ALL DIMENSIONS ARE TO BE SCALED TO.

REVISIONS			
No.	Date	Description	By
12/13/2016		PRELIMINARY DRAWINGS FOR REVIEW	

STEENBURG LAKE ROAD NORTH



G.D. JEWELL ENGINEERING INC.
 CONSULTING ENGINEERS

PROXIMON TEL: (813) 388-2250 FAX: (813) 388-2754 E-mail: gje@jewelleng.com

SEVILLE TEL: (813) 965-1111 FAX: (813) 965-0988 E-mail: hje@jewelleng.com

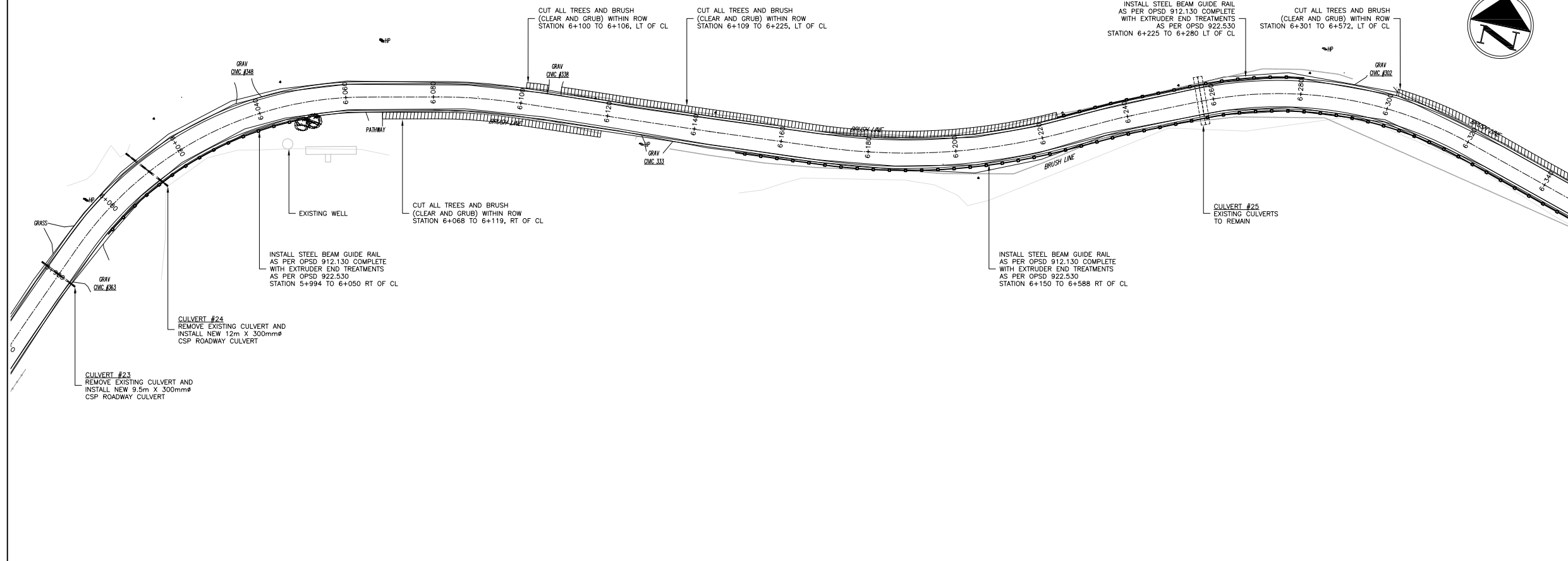
INDIANAPOLIS TEL: (813) 655-1932 FAX: (813) 655-6428 E-mail: hje@jewelleng.com

TOLL FREE 1-800-966-4338
 www.jewelleng.com

TOWNSHIP OF LIMERICK
 REHABILITATION OF
 STEENBURG LAKE ROAD NORTH

Drawn by: CCG Project No: 150-3794
 Designed by: CB Date: DECEMBER 2016
 Checked by: CB Scale - Hor: Vert:
 Approved by: CB Contract No: Drawing No: 9

STEENBURG LAKE ROAD NORTH

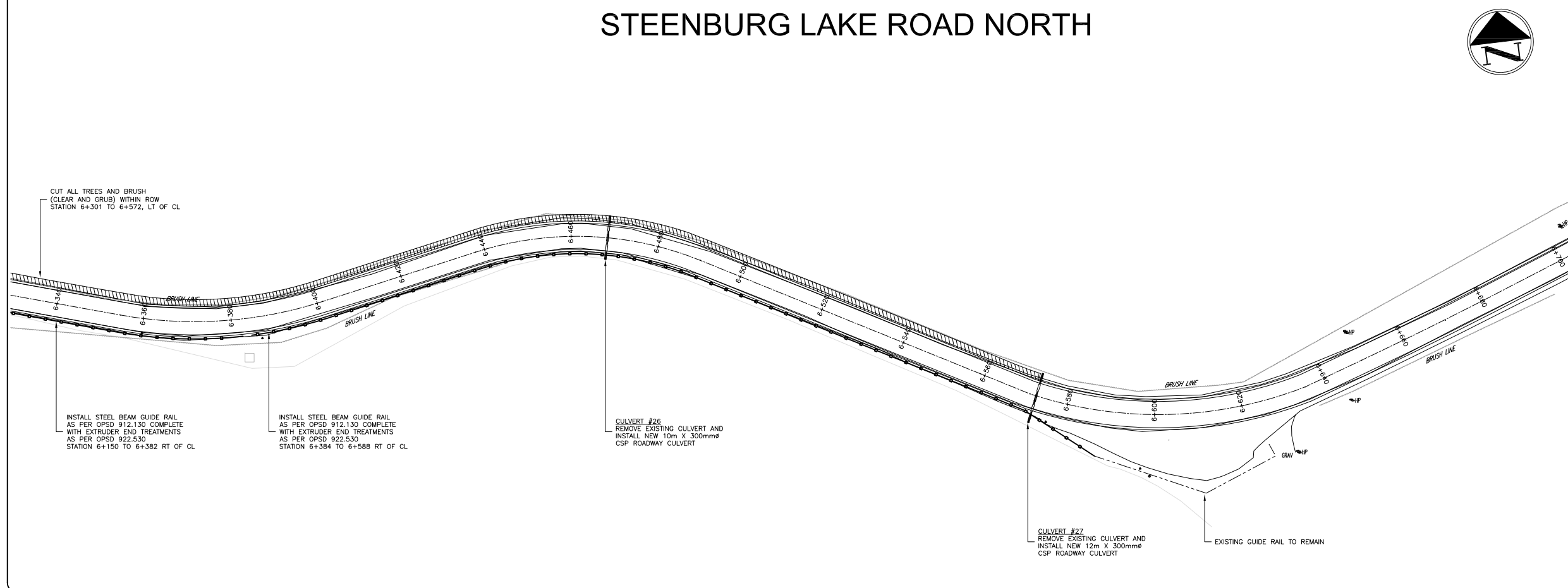


GENERAL NOTES:
 ALL DIMENSIONS TO BE SHOWN ON THE DRAWING TO CORROBORATE ANY WORK. ANY DIMENSIONS ARE TO BE SHOWN TO THE CORNER/END POINTS.
 ALL UTILITY LOCATIONS SHOWN ON THE DRAWING ARE APPROXIMATE. THE CONTRACTOR SHALL VERIFY THE LOCATION OF THE AND REMOVE ALL UTILITIES FOR EXISTING AND ALL UTILITIES.
 REGARDING THE EXISTING AND APPROXIMATE LOCATIONS FOR THIS PROJECT, NO OTHER MEASUREMENTS ARE TO BE USED AS A REFERENCE EXCEPT FOR ANY PURPOSE.
NOTICE:
 ALL DIMENSIONS SHOWN ARE IN METERS OR MILLIMETERS UNLESS OTHERWISE NOTED.
ALL DIMENSIONS ARE TO BE SHOWN TO THE CORNER/END POINTS.

REVISIONS

No.	Date	Description	By
12/13/2016		PRELIMINARY DRAWINGS FOR REVIEW	

STEENBURG LAKE ROAD NORTH



G.D. JEWELL ENGINEERING INC.
 CONSULTING ENGINEERS

PROXIMA **QUEBEC** **MONTREAL**

TEL: (514) 389-2250 TEL: (514) 965-1111 TEL: (514) 965-1912
 FAX: (514) 389-2754 FAX: (514) 965-0988 FAX: (514) 965-0428
 E-mail: gje@gdjewell.com E-mail: qje@gdjewell.com E-mail: mje@gdjewell.com

TOLL FREE 1-800-966-4338
 www.gdjewell.com

**TOWNSHIP OF LIMERICK
 REHABILITATION OF
 STEENBURG LAKE ROAD NORTH**

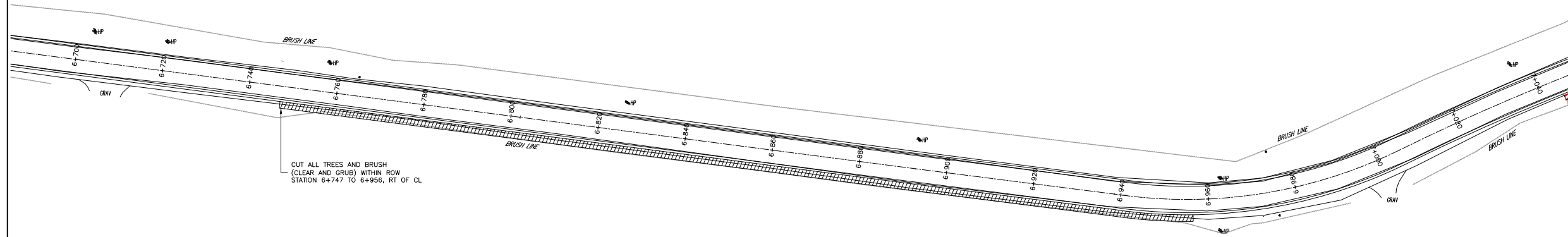
Drawn by: CCG Project No: 150-3794
 Designed by: CB Date: DECEMBER 2016
 Checked by: CB Scale - Hor: Vert:
 Approved by: CB Contract No: Drawing No: 10

STEENBURG LAKE ROAD NORTH



GENERAL NOTES:
 ALL DIMENSIONS TO BE VERIFIED ON SITE PRIOR TO COMMENCING ANY WORK. ANY DISCREPANCIES ARE TO BE REPORTED TO THE CONSULTANT IMMEDIATELY.
 ALL UTILITY LOCATIONS SHOWN ON THE DRAWINGS ARE APPROXIMATE. THE CONTRACTOR SHALL VERIFY THE LOCATION OF ALL UTILITIES AND LOCATIONS FOR EXISTING OR ALL UTILITIES.
 EXISTING UTILITIES AND STRUCTURES PROVIDED FOR THIS PROJECT OR OTHER UTILITIES ARE TO BE USED AS A REFERENCE DATUM FOR ALL PURPOSES.
MEASUREMENTS:
 ALL DIMENSIONS SHOWN ARE IN METERS UNLESS OTHERWISE SPECIFIED.
 ALL DIMENSIONS ARE NOT TO BE SCALED.

REVISIONS			
No.	Date	Description	By
12/13/2016		PRELIMINARY DRAWINGS FOR REVIEW	



STEENBURG LAKE ROAD NORTH



G.D. JEWELL ENGINEERING INC.
 CONSULTING ENGINEERS

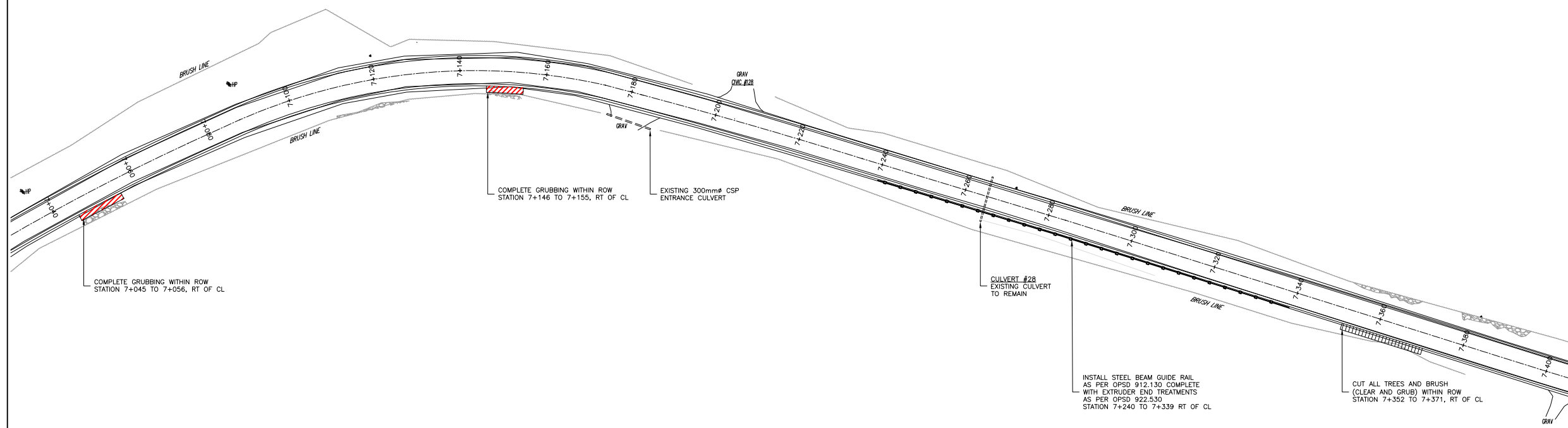
PROXIMON TEL: (813) 388-2250 FAX: (813) 388-2754 E-mail: gje@gdjewell.com

SELEWILLE TEL: (813) 965-1111 FAX: (813) 965-0988 E-mail: hje@gdjewell.com

INDUSSAUNGA TEL: (805) 655-1932 FAX: (805) 655-6238 E-mail: hje@gdjewell.com

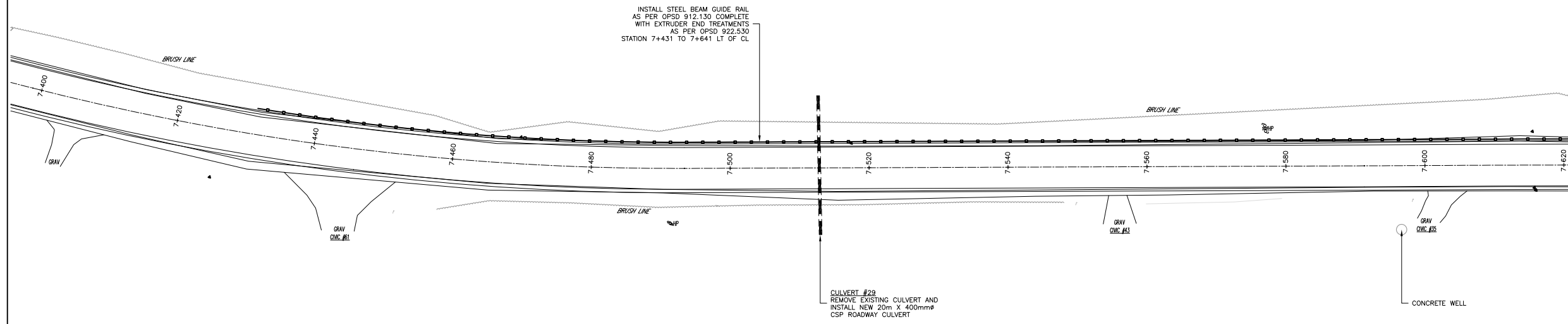
TOLL FREE 1-800-966-4338
 www.jewelleng.ca

TOWNSHIP OF LIMERICK
 REHABILITATION OF
 STEENBURG LAKE ROAD NORTH



Drawn by: CCG Project No: 150-3794
 Designed by: CB Date: DECEMBER 2016
 Checked by: CB Scale - Hor: Vert:
 Approved by: CB Contract No: Drawing No: 11

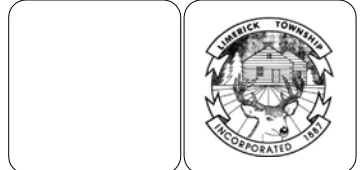
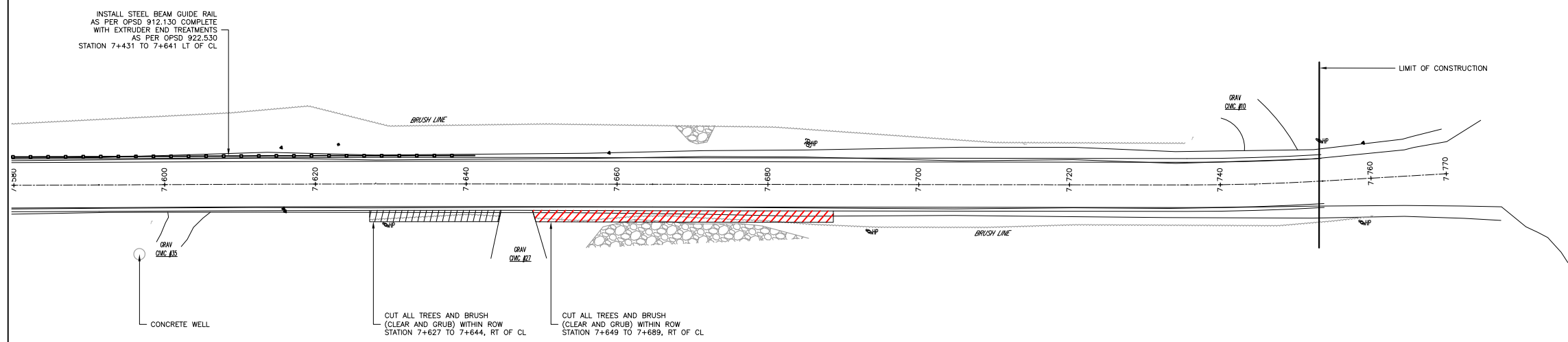
STEENBURG LAKE ROAD NORTH



GENERAL NOTES:
 ALL DIMENSIONS TO BE SHOWN ON THE DRAWING TO CORRESPOND ANY WORK. ANY DIMENSIONS ARE TO BE REFERRED TO THE CORRESPONDING DIMENSIONS.
 ALL UTILITY LOCATIONS SHOWN ON THE DRAWING ARE APPROXIMATE. THE CONTRACTOR SHALL VERIFY THE LOCATION OF THE AND REMOVE ALL UTILITIES FOR EXISTING OR ALL UTILITIES.
 REGARDING THE APPROXIMATE AND ACCURATE PROVIDED FOR THIS PROJECT, NO OTHER MEASUREMENTS ARE TO BE USED AS A REFERENCE EXCEPT FOR ANY PURPOSE.
METRIC NOTE:
 ALL DIMENSIONS SHOWN ARE IN METERS OR MILLIMETERS UNLESS OTHERWISE NOTED.
 ALL DIMENSIONS ARE NOT TO BE SCALED.

REVISIONS			
No.	Date	Description	By
12/13/2016		PRELIMINARY DRAWINGS FOR REVIEW	

STEENBURG LAKE ROAD NORTH



G.D. JEWELL ENGINEERING INC.
 CONSULTING ENGINEERS

PROXIMA **QUEBEC** **MONTREAL**

TEL: (514) 388-2250 TEL: (514) 388-1111 TEL: (514) 388-1932
 FAX: (514) 388-2754 FAX: (514) 388-0988 FAX: (514) 388-4028
 E-mail: gje@gdjewell.com E-mail: mj@gdjewell.com E-mail: rd@gdjewell.com

TOLL FREE 1-800-966-4338
 www.gdjewell.com

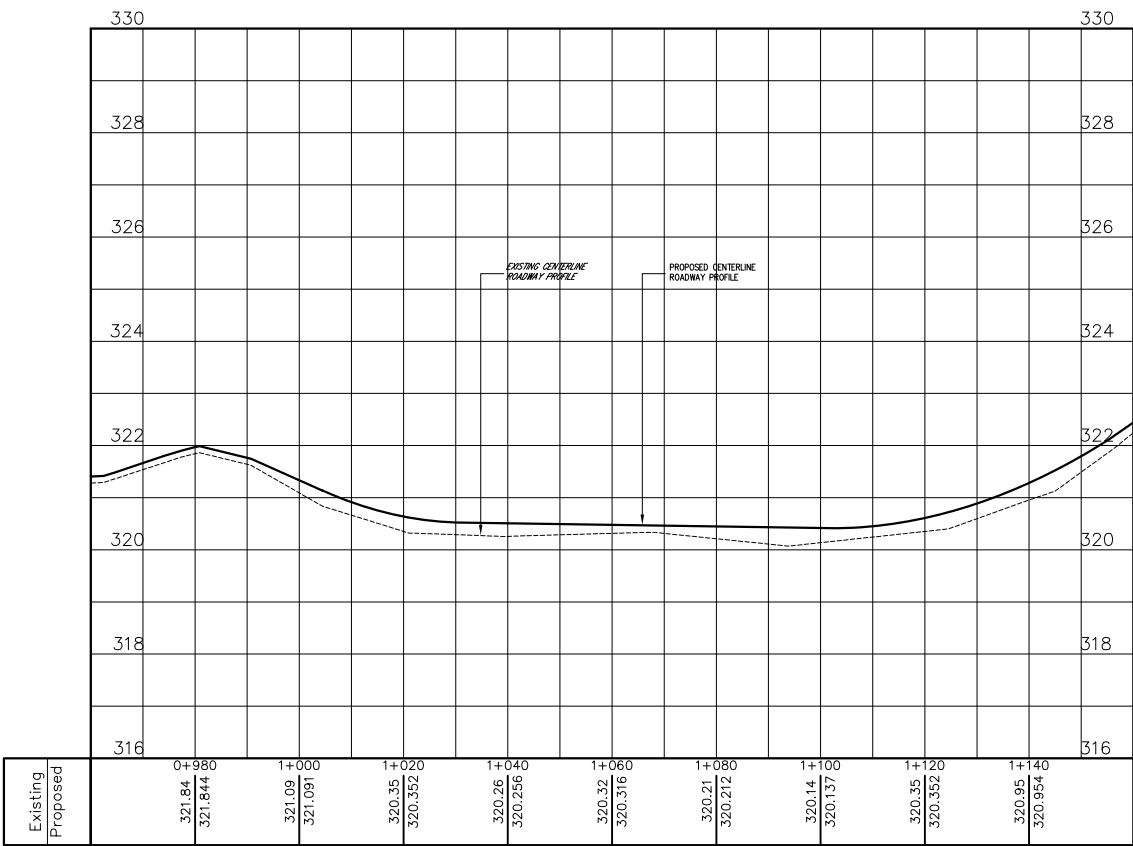
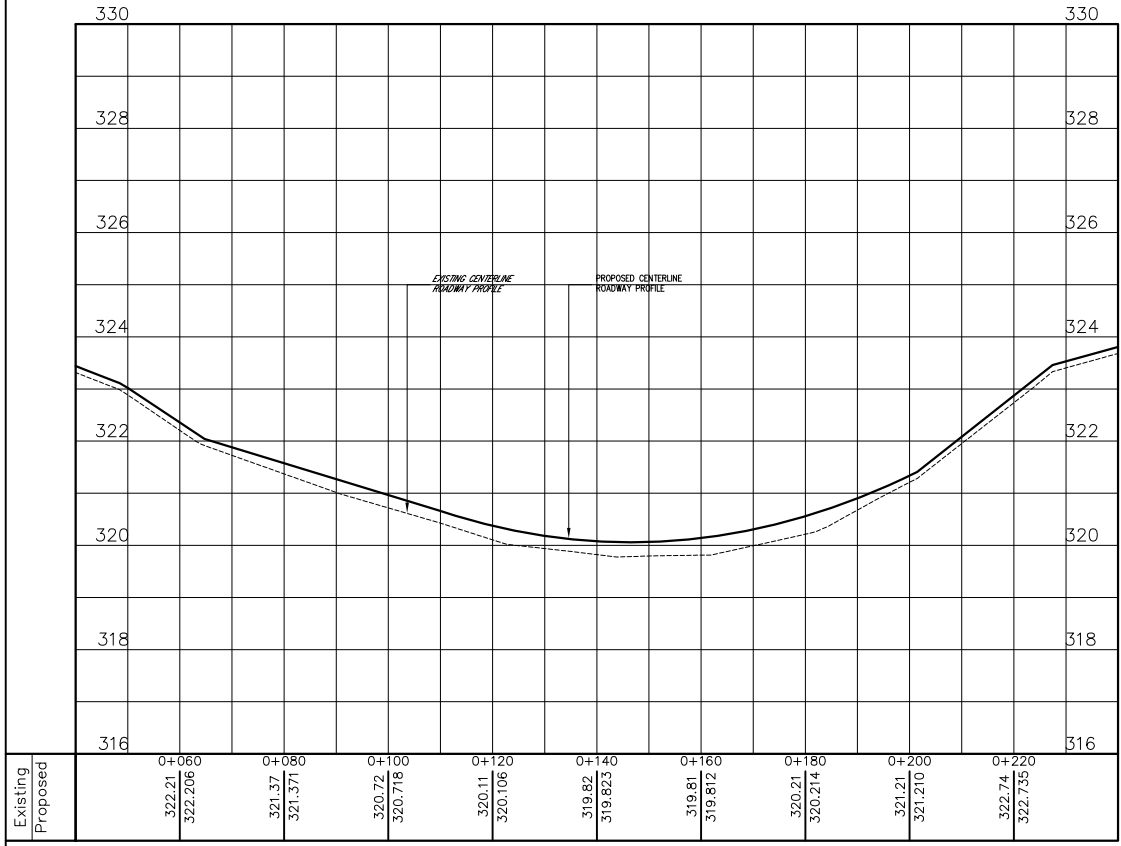
TOWNSHIP OF LIMERICK
 REHABILITATION OF
 STEENBURG LAKE ROAD NORTH

Drawn by: CCG Project No: 150-3794
 Designed by: CB Date: DECEMBER 2016
 Checked by: CB Scale - Hor: Vert:
 Approved by: CB Contract No: Drawing No: 12

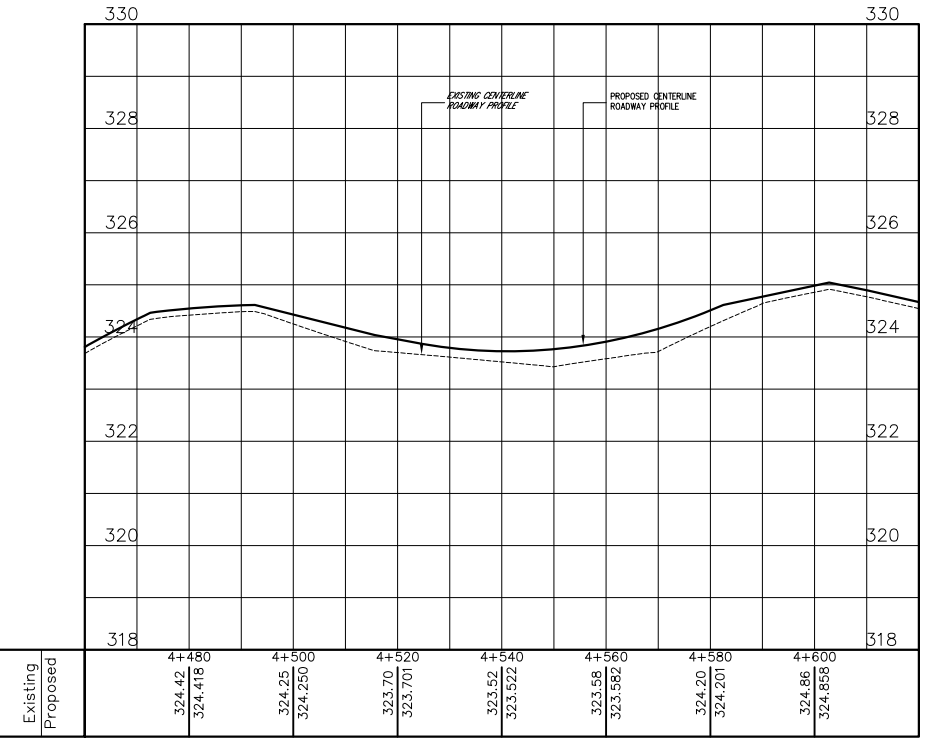
STEENBURG LAKE ROAD NORTH

GRADE RAISE #1

GRADE RAISE #2



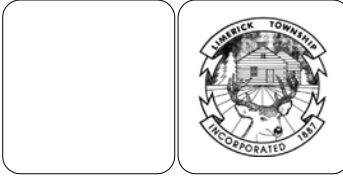
GRADE RAISE #3



GENERAL NOTES:
 ALL DIMENSIONS TO BE SHOWN ON THE DRAWING TO CORRESPOND ANY WORK. ANY DIMENSIONS ARE TO BE SHOWN TO THE CORNER UNLESS OTHERWISE NOTED.
 ALL UTILITY LOCATIONS SHOWN ON THE DRAWING ARE APPROXIMATE. THE CONTRACTOR SHALL VERIFY THE LOCATION OF ALL UTILITIES AND REPORT ALL LOCATIONS TO THE ENGINEER.
 REGARDING THE EXISTING AND PROPOSED GRADES FOR THIS PROJECT, NO OTHER ELEVATIONS ARE TO BE USED AS A REFERENCE EXCEPT FOR ANY PURPOSE.
VERTICAL CURVE:
 ALL DIMENSIONS SHOWN ARE IN METERS OR DERIVED FROM GRADE CHANGES.
SCALE:
 ALL DIMENSIONS ARE NOT TO BE SCALED.

REVISIONS

No.	Date	Description	By
12/13/2016		PRELIMINARY DRAWINGS FOR REVIEW	



G.D. JEWELL ENGINEERING INC.
 CONSULTING ENGINEERS

PROXIMA **QUEBEC** **MONTREAL**

TEL: (514) 388-2250 TEL: (514) 388-1111 TEL: (514) 388-1112
 FAX: (514) 388-2754 FAX: (514) 388-0888 FAX: (514) 388-0828
 E-mail: gje@gdjewell.com E-mail: qje@gdjewell.com E-mail: mje@gdjewell.com

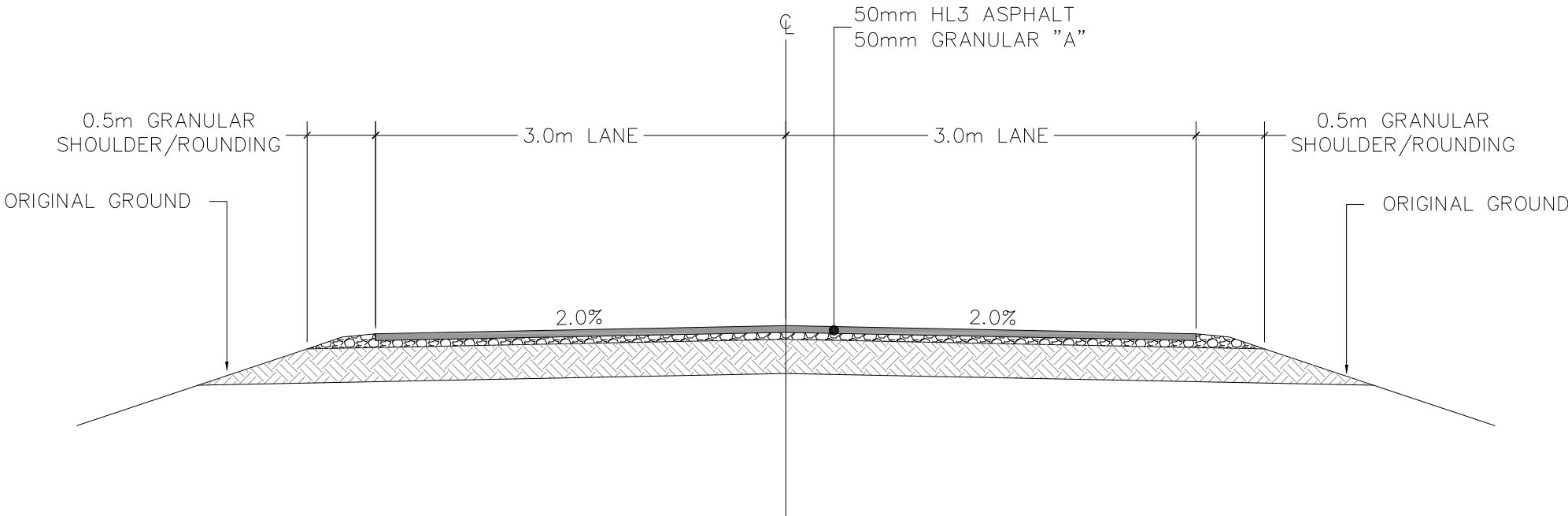
TOLL FREE 1-800-966-4338
 www.gdjewell.com

TOWNSHIP OF LIMERICK
 REHABILITATION OF
 STEENBURG LAKE ROAD NORTH

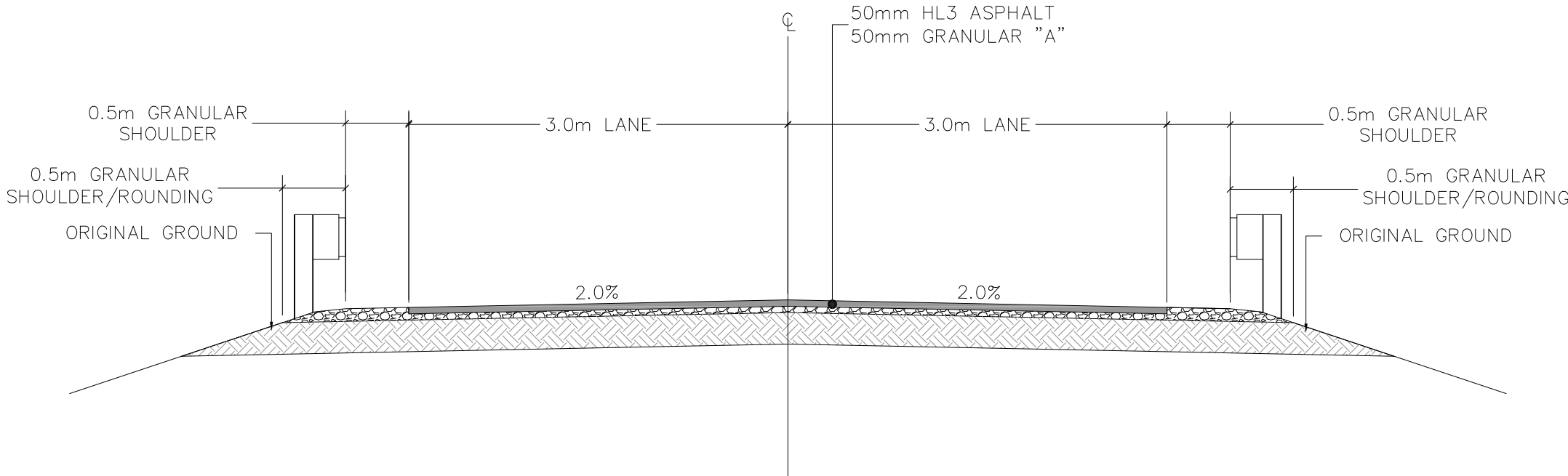
Drawn by: CCG Project No: 150-3794
 Designed by: CB Date: DECEMBER 2016
 Checked by: CB Scale - Hor: Vert:
 Approved by: CB Contract No: Drawing No: 13

STEENBURG LAKE ROAD NORTH

STEENBURG LAKE ROAD N – RECONSTRUCTION TYPICAL SECTION



STEENBURG LAKE ROAD N – RECONSTRUCTION TYPICAL GUIDE RAIL SECTION



GENERAL NOTES:
 ALL DIMENSIONS TO BE VERIFIED ON SITE PRIOR TO COMMENCING ANY WORK. ANY DISCREPANCIES ARE TO BE REPORTED TO THE CONSULTANT IMMEDIATELY.
 ALL UTILITY LOCATIONS SHOWN ON THE DRAWINGS ARE APPROXIMATE. THE CONTRACTOR SHALL VERIFY THE LOCATION OF ALL UTILITIES AND PROVIDE ALL NECESSARY PROTECTIVE MEASURES FOR ALL UTILITIES.
 REGARDING THE APPROXIMATE AND APPROXIMATE PROVIDED FOR THIS PROJECT, NO OTHER MEASUREMENTS ARE TO BE USED AS A REFERENCE EXCEPT FOR ANY PURPOSE.
NOTICE:
 ALL DIMENSIONS SHOWN ARE IN METERS UNLESS OTHERWISE SPECIFIED.
 ALL DIMENSIONS ARE NOT TO BE SCALE.

REVISIONS

No.	Date	Description	By
12/13/2016		PRELIMINARY DRAWINGS FOR REVIEW	



G.D. JEWELL ENGINEERING INC.
 CONSULTING ENGINEERS

PROXIMA **QUEBEC** **MONTREAL**

TEL: (514) 398-2250 TEL: (514) 965-1111 TEL: (505) 650-1502
 FAX: (514) 398-2754 FAX: (514) 965-0988 FAX: (505) 650-6428
 E-MAIL: gje@gdjewell.com E-MAIL: qje@gdjewell.com E-MAIL: mje@gdjewell.com

TOLL FREE 1-800-966-4338
 www.jewelleng.ca

TOWNSHIP OF LIMERICK
 REHABILITATION OF
 STEENBURG LAKE ROAD NORTH

Drawn by: CCG Project No: 150-3794
 Designed by: CB Date: DECEMBER 2016
 Checked by: CB Scale - Hor: Vert:
 Approved by: CB Contract No: Drawing No: 14